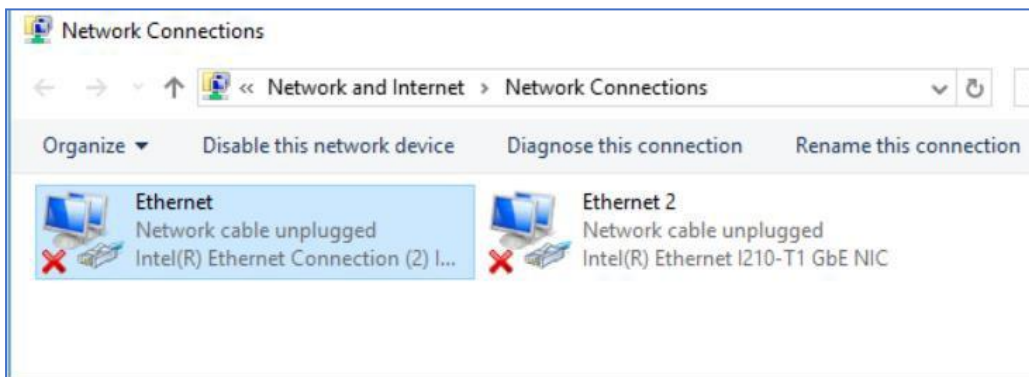


## SureScan PC Network Configuration Instructions for Windows 10

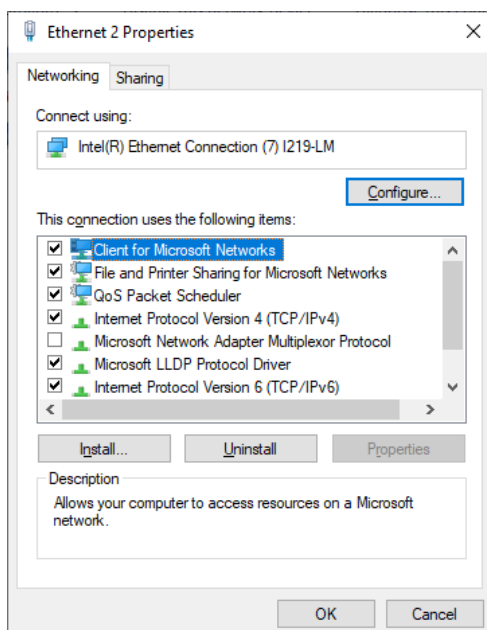
To configure the network adapters on a new or reimaged computer workstation for a SureScan Microarray Scanner, perform the following steps:

1. Click Start (  ) -> Settings (  ) -> Network and Internet -> Change adapter options



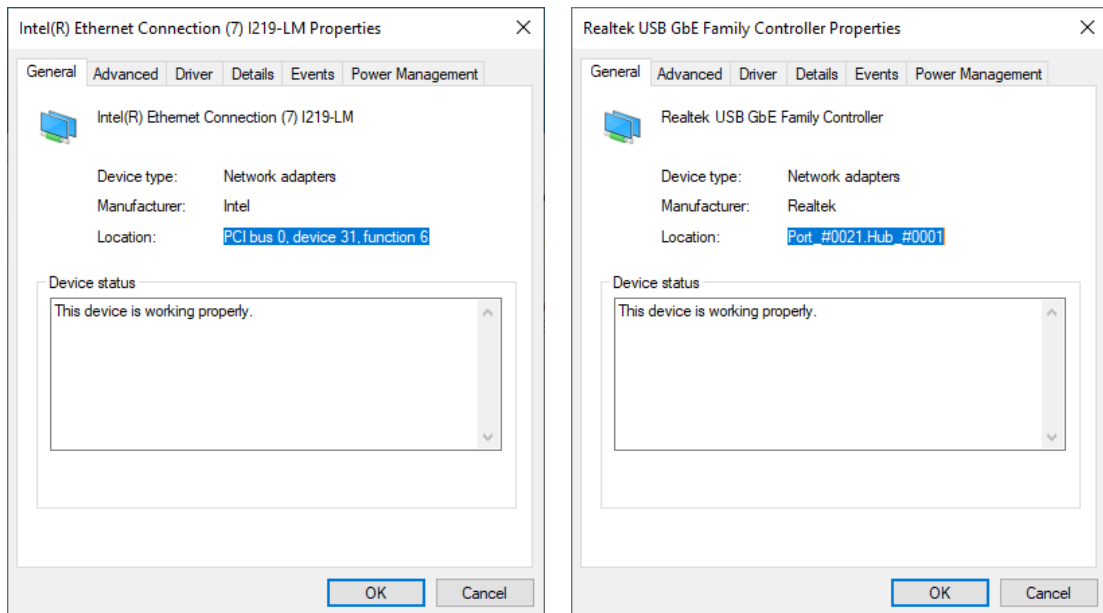
Two Ethernet adapter ports are standard equipment on Agilent scanner host PCs, one on the motherboard (onboard) labeled House and one add-on adapter labeled Scanner. Prior to connecting Ethernet cables, the Network Connections will be displayed as illustrated above.

2. Right click on one of the Ethernet adapters and select **Properties** from the popup menu.
3. Click on **Configure...** in the Properties panel.



## Scanner PC Network Configuration

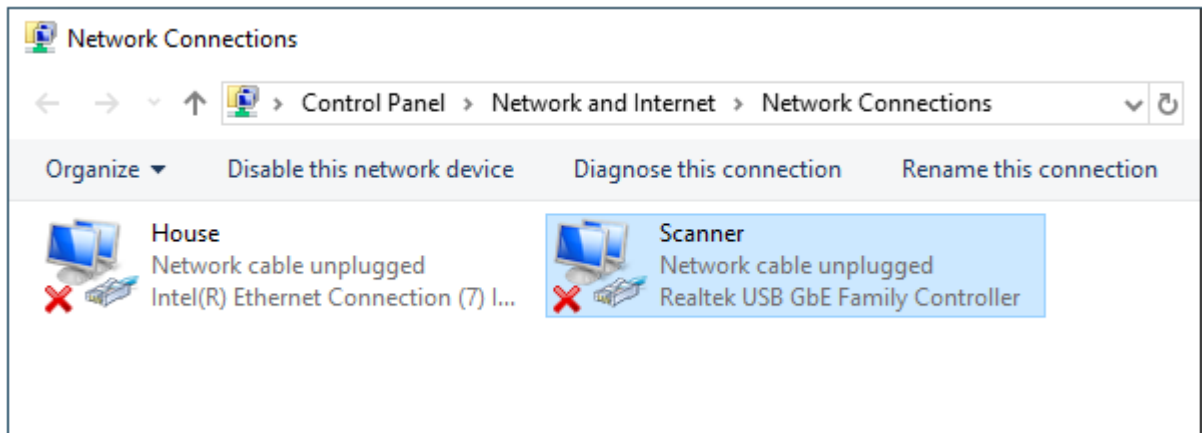
4. In the new Properties window that opens, note the **Location** of the Ethernet connection.



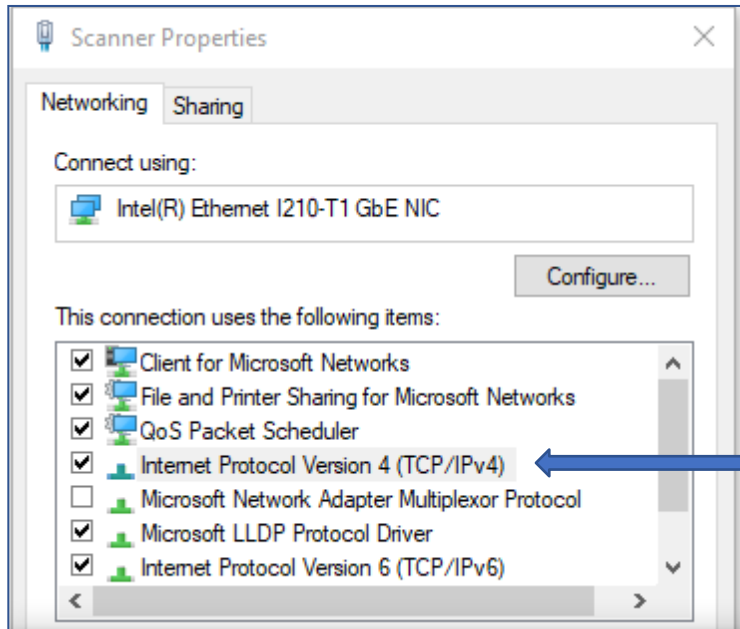
5. If the Location specified is **PCI bus...**, it is the onboard adapter. Change the name to “House” as follows:
  - Go back to the Network Connections window, right click on the same Ethernet adapter as before, and select **Rename**. Enter the new name.

If the Location specified is **PCI slot...** or **Port...**, it is the add-on adapter. Change the name to “Scanner” instead.

6. Repeat the renaming procedure for the other Ethernet connection, beginning at step 2.
7. When complete, the Network Connections will be displayed as follows:

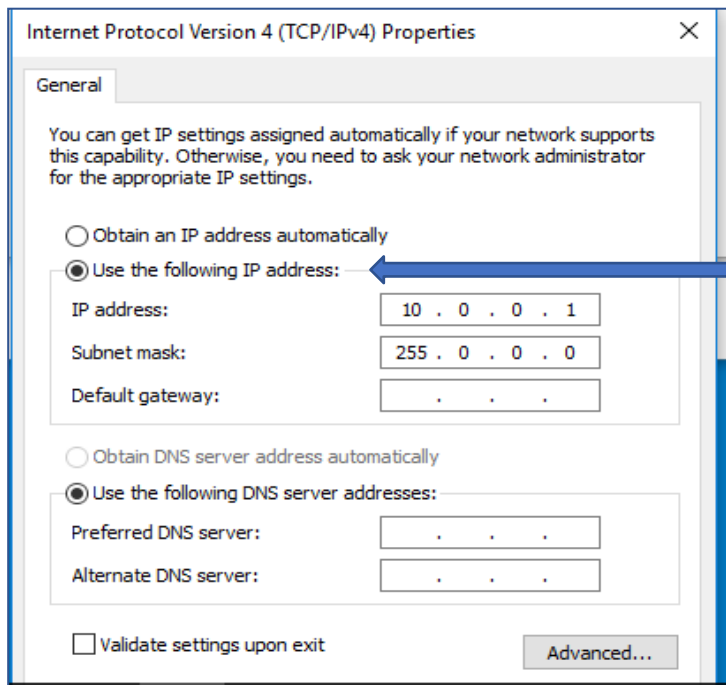


- Right click on the “Scanner” connection and select **Properties**.



- Double click on **Internet Protocol Version 4 (TCP/IPv4)**.

- Select **Use the following IP address:**



- Enter the IP address **10.0.0.1** and Subnet mask **255.0.0.0**, as shown above, then click **OK**.

- Click **OK** in the Scanner Properties panel.

## Scanner PC Network Configuration

13. Close the Network Connections window.
14. Close the Network and Internet Status window.

The network connection for the scanner is now configured.